

Santa Clara Valley Section New Member & Senior Member Elevation Program

Oct. 8, 2016

Joseph Wei

Chair, Santa Clara Valley Section

joseph.wei@ieee.org



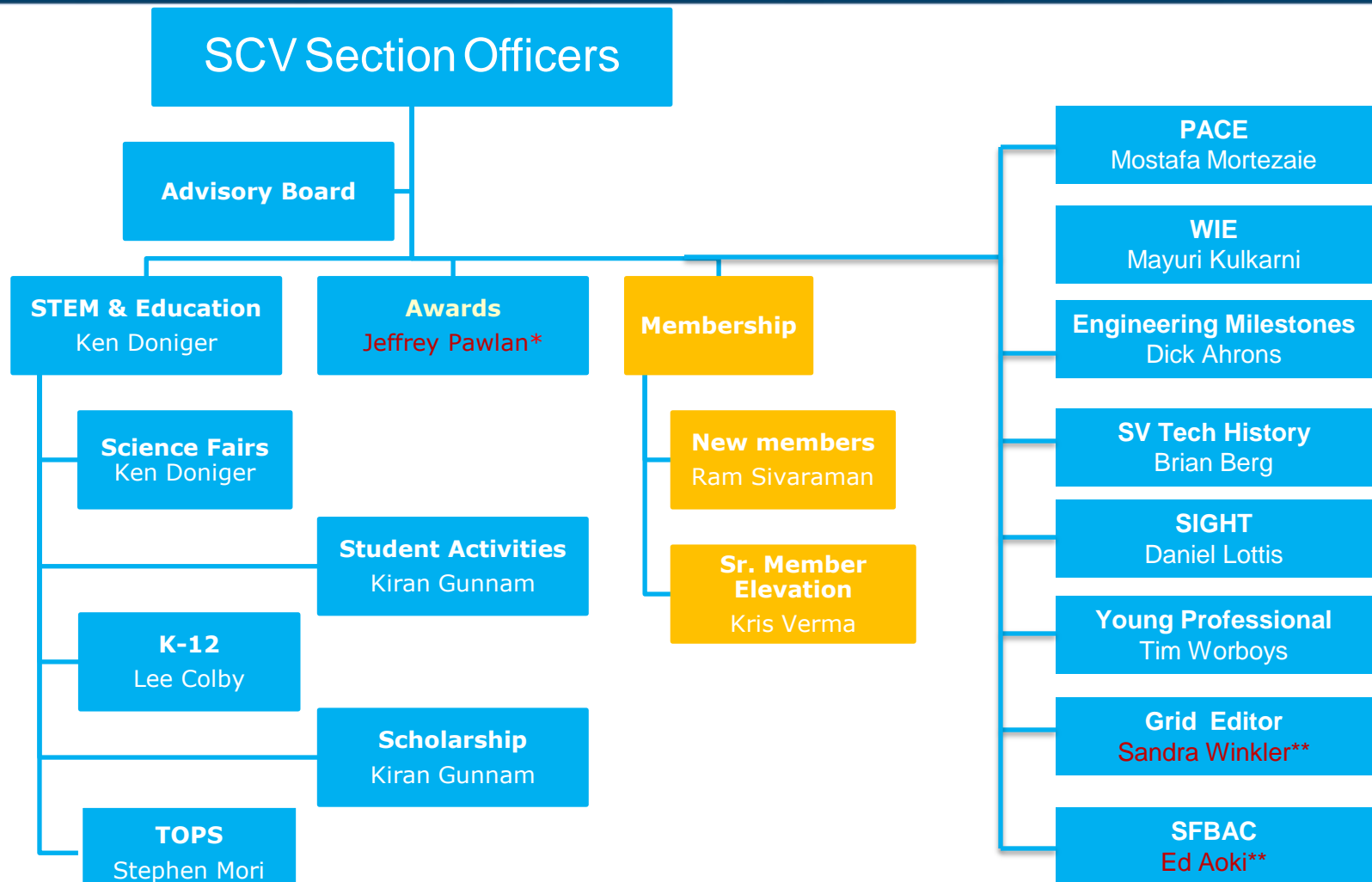
Santa Clara Valley Section Overview

- ~13,000+ members
- 32 Chapters
- 4 Affinity Groups (Consultants Network, Life Members, WIE, Young Professionals)
- 4 Committees (K-12, SIGHT, Tech History, TOPS)
- 10 Student Units in 4 Universities (San Jose State U., Santa Clara U., Stanford U., UC Santa Cruz)

Chapters

Antennas & Propagation	Circuits & Systems
Communications	Components Packaging & Manufacturing Technology
Computational Intelligence	Computer
<i>Consultants' Network</i>	Consumer Electronics
Control Systems	Education
Electromagnetic Compatibility	Electron Devices
Engineering In Medicine & Biology	Information Theory Group
Instrumentation & Measurement	Magnetics
MEMS & Sensors Chapter	Microwave Theory & Techniques
Nanotechnology	Photonics
PhotoVoltaics	Power Electronics
Power & Energy & Industry Applications	Product Safety Engineering
Reliability	Robotics & Automation
Signal Processing	Solid State Circuits
<i>Life Members</i>	Technology Management
Vehicular Technology	<i>Women in Engineering</i>

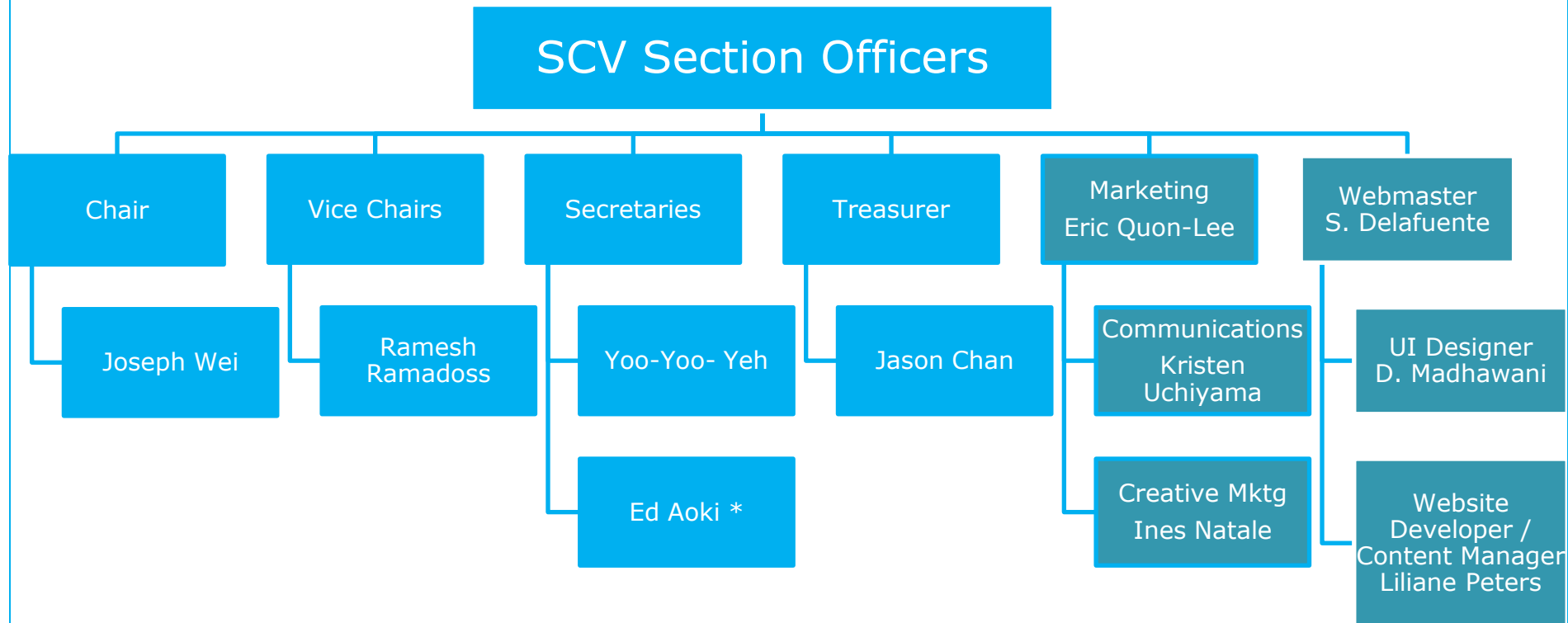
2016 SCV Excom Organization



Region 6 Center & Region 6 October 8, 2016
 *: Section & Region
 **: SFBAC



2016 SCV Section Organization



*: SFBA Chair 6 Central Area Meeting – October 8, 2016

Membership Development



CERTIFICATE OF RECOGNITION

The IEEE Member Recruitment and Recovery Committee recognizes

Santa Clara Valley Section ExCom

*For outstanding achievement in member recruitment for the
Santa Clara Valley Section during the 2015 membership year.*



Antonio Luque
*Chair, 2015 IEEE Member Recruitment
and Recovery Committee*

Membership Development

■ How we did it?

- Engage life members and recently elevated senior members to call each of the members in arrears or those who have not renewed to renew their membership
- Hold New member welcome event
 - It's an excellent way to recruit new officers for chapters
- Participate in industry events
 - Maker Faire
 - Flash Memory Summit
 - CASPA Career Day

How SCV Manages Sr. Member Elevation

- Nominate a Sr. Member Elevation Chair as a Section Excom member
- Support the Sr. Member Elevation Chair in recruiting other senior members to assist during these quarterly meetings
- Encourage potential interested members to seek references from the chapter officers of the chapters they belong to
- Schedule quarterly face to face Senior Member Elevation meetings with member applicants and senior members volunteers

Sr. Member Elevation Night

- Announce quarterly meeting to all SCV Section members
- Provide guidelines to candidates on what to include in their resume
- Set up Eventbrite to track registration to ensure proper Sr. Members to members for interview ratio

Backup

Senior Member Elevation Introduction

IEEE Admission & Advancement (A&A) Committee

- The Admission and Advancement Committee is a standing committee of the Member and Geographic Activities Board
- Implements and recommends new IEEE policies, rules and procedures for admission and transfer to all grades of membership except Honorary Member and Fellow grades

Member Grade Elevation and Recognition

■ Grades:

- Honorary Member
- Fellow
- **Senior Member * ←-----**
- Member
- Associate Member
- Graduate Student Member
- Student Member

* The highest IEEE grade for which IEEE members can apply

Benefits of Senior Member Grade (1)

- **Recognition:** The professional recognition of your peers for technical and professional excellence.
- **Senior Member Plaque:** Since January 1999, all newly elevated senior members have received an engraved Senior Member plaque to be proudly displayed for colleagues, clients and employers to see. The plaque, an attractive fine wood with bronze engraving, is sent within six to eight weeks after elevation.
- **US\$25 Coupon:** IEEE will recognize all newly elevated senior members with a coupon worth up to US\$25. This coupon can be used to join one new IEEE society. The coupon expires on 31 December of the year in which it is received.
- **Letter of Commendation:** A letter of commendation will be sent to your employer on the achievement of senior member grade (upon the request of the newly elected senior member).

Benefits of Senior Member Grade (2)

- **Announcements:** Announcement of elevation can be made in section/society and/or local newsletters, newspapers and notices.
- **Leadership Eligibility:** Senior members are eligible to hold executive IEEE volunteer positions.
- **Ability to Refer Other Candidates:** Senior members can serve as a reference for other applicants for senior membership.
- **Review Panel:** Senior members are invited to be on the panel to review senior member applications.
- **US \$25 Voucher:** Newly elevated Senior Members are encouraged to find the next “Innovators of Tomorrow”. New joins can use the voucher towards IEEE membership.
- **Certificate:** Via myIEEE enhancement

Benefits of Senior Members to the IEEE

■ Senior Members:

- **Senior Members have a high retention rate.**
- are eligible to hold executive IEEE volunteer positions.
- can serve as a reference for other applicants for senior membership.
- are invited to be on the panel to review senior member applications.

Admission and Advancement Procedures

A&A review panels are composed of IEEE Senior Members and Fellows that meet periodically as working groups in sites rotated among the Regions.

- Panels review all applications for Senior Member grade since the last review panel meeting

Membership Qualifications

Membership qualifications pertain to **IEEE Designated Field**, which include:

- Engineering
- Computer Science & Information Technology
- Physical Sciences
- Biological and Medical Sciences
- Mathematics
- Technical Communications, Education, Management, Law, and Policy

Requirements for Senior Member Elevation

- ❑ 10 years of Professional Experience
- ❑ 5 years of Significant Performance
- ❑ References: Required from Senior Members, Fellows or Honorary Members
 - 2 if nominated, 3 if self nominated

Professional Experience Calculation

Education:

- 3 years for a BS in an IEEE-designated field

or

- 4 years for a Masters

or

- 5 years for a Doctorate

Work Experience:

- Additional 7, 6 or 5 years of professional practice depending on years credited for degree.
- Education total not to exceed 5 years
- Education + Work must total 10 years or more

References

- If an applicant was nominated, the nomination serves as one (1) reference and two (2) additional references are required. Assumption – the nominator believes the nominee is well qualified and therefore does not submit a reference form.
- If an applicant nominates him/herself, three (3) references forms are required and are included in the application package.

2016 Review Dates and Locations

https://www.ieee.org/membership_services/membership/senior/review_panel.html

2016 Dates	Location
13 February	San Diego, CA, USA (R6)
19 March	Bombay, India (R10)
23 April	Atlanta, GA (R3)
21 May	Paris, France (R8)
25 June	Philadelphia, PA, USA (R2)
23 July	Ottawa, Canada (R7)
10 September	Hong Kong (R10)
19 November	New Brunswick, NJ, USA (R1)

5-Step Guideline for Completing Evaluation Sheet for Panel Members

- 1. Educational Information – Enter number of years of credit
Bachelors-3, Masters=4, PhD-5
- 2. Professional Experience – Note number of years of
experience
- 3. Add results from above two steps. Total \geq 10 years
- 4. Review professional experience for significant
performance. This should be at least 5 years.
- 5. Decision – Check one of Qualified, Pending, or Unqualified
boxes

Significant Performance Indicators

- Demonstrated work beyond the entrance level.
- Teaching
- Research
- Industry
 - Practitioners, Consultants and Entrepreneurs

Other Contributions within the IEEE designated fields.

Key issues for the Selection Panel

- Clear definition of your contribution and the specific dates of performance.
 - Does the contribution you describe meet the “significant performance” criteria?
 - Is the period of performance clearly stated to measure your years of significant performance?

Examples for Discussion: (Adequate)

- 03/2003-5/2005 – Chief IT person and critical employee of the department of Radiation Oncology – a Clinic, Academic, and Research cancer center at XXXX Cancer Hospital, providing network and PC support to xx staff members.
- 5/2005-7/2008 – At XXX Company, led a team of XX engineers and technicians to construct two ground based radars.
- 7/2003-10/2010 – As an Adjunct Professor at XXX, conducted five peer reviewed journal articles, three peer-reviewed conference papers and published three conference papers. Published a book chapter on XXX. See attached list.

Examples for Discussion: (Adequate)

- An applicant/nominee has no degree and has worked for many years in the electric industry as a technician. Ten years ago, he accepted an engineering level position and continued with it since that time. Included was a period of at least five years with demonstrated significant performance.
- An applicant/nominee retired some years ago and has not been active recently in the profession. Prior to retirement, the applicant/nominee had at least ten years of professional experience, including five years of significant performance.

Reviewers Decision: Qualified, Pending, Unqualified

- **Qualified:** The applicant meets the requirements and is approved by the reviewer.
 - Reviewers comments are not necessary.
- **Pending:** The applicant is close to meeting the requirements. Additional information is needed for another review panel to reconsider.
 - The reviewer should provide helpful comments for resubmission
- **Unqualified:** The requirements for at least 10 years of professional experience and 5 years of significant performance have not been met. Additional information is not likely to change that result.
 - The reviewer should provide explanatory comments.

Deferred or Denied Applications

- Applicant and/or nominator receive an email requesting additional information – per review panels comments
- Application will be reviewed a second time at an upcoming meeting
- New information received is added to current application package

Start your application

Google: "IEEE Senior Member Grade"

IEEE - Senior Member Grade

Senior member is the highest grade for which **IEEE** members can apply. **IEEE** members can self-nominate, or be nominated, for **Senior member** grade.

http://www.ieee.org/membership_services/membership/senior/index.html

Application Sections

- Applicant information
- Education
- Job profile
- References
 - Reference forms will automatically attach
- Attachments
 - Suggest resume or CV
- Review / submit
 - You may work on your application in multiple sessions
 - You may make changes until you "Submit"

Questions ?

תודה
Dankie Gracias
Спасибо شكراً
Merci Takk
Köszönjük Terima kasih
Grazie Dziękujemy Děkojame
Ďakujeme Vielen Dank Paldies
Kiitos Täname teid 谢谢
Thank You Tak
感謝您 Obrigado Teşekkür Ederiz
감사합니다